



Monitoring Report

Al Areen Desert Spa & Resort
Weekly Monitoring for Wadi Fountain and Vitality
Pool
March 10-20, 2016



Wadi Fountain



Comparison- one week interval

March 09, 2016

March 16, 2016- water has more algae detached from the stones at the bottom part of the lake



Comparison- one week interval

March 09, 2016

March 16, 2016- more algae are almost detached from the stone and bottom part of the lake



pH status of the water is 7.8 which is the main reason why algae are already dying. The original pH which is 9.2-9.4 as indicated in the 1sr weekly report is a STRONG indicator of strong attachment of algae and too much foul odor in the area before the installation of ScaleWatcher. As of today, no more fouling odor affecting the guests and staffs of Al Areen Palace and Spa.



Significant Change- March 19, 2016



Significant Change- March 19, 2016

more algae are already detached completely and floated on the water



Healthy indications of the water cleaning process- March 19, 2016

This area needs more crew to manually remove the algae. Regular removal will ensure faster recovery of the area to have cleaner water not favorable for the algae to grow.



Observation(s):

- pH of the water in 5 locations is between 7.5- 7.8 as compared to last week which is 7.8- 8.4
- Use of chemical tablets were noted in the upper portion of the lake.
- No fouling odor in the area.
- Floating algae have surfaced and are now easily removed by the maintenance crew through manual sieving.
- More algae has detached from the stones and started to surface.



Recommendation(s)

- Increase the water level to facilitate further cleaning of stones on higher surface
- Increase water circulation within the lake; additional pump or manual creation of water flow in identified areas
- Regular monitoring of SW installed in the pump room
- Continue the NO CHEMICAL maintenance since day 1
- Deploy 4-6 maintenance crew to manually remove the algae that has surfaced already .
- **Bacterial filtration** in the water is a vital option to consider to expedite the cleaning process in the area.



Vitality Pool



Comparison- one week interval

March 09, 2016

March 16, 2016



Comparison- one week interval

March 09, 2016



March 16, 2016



Comparison- one week interval

March 09, 2016

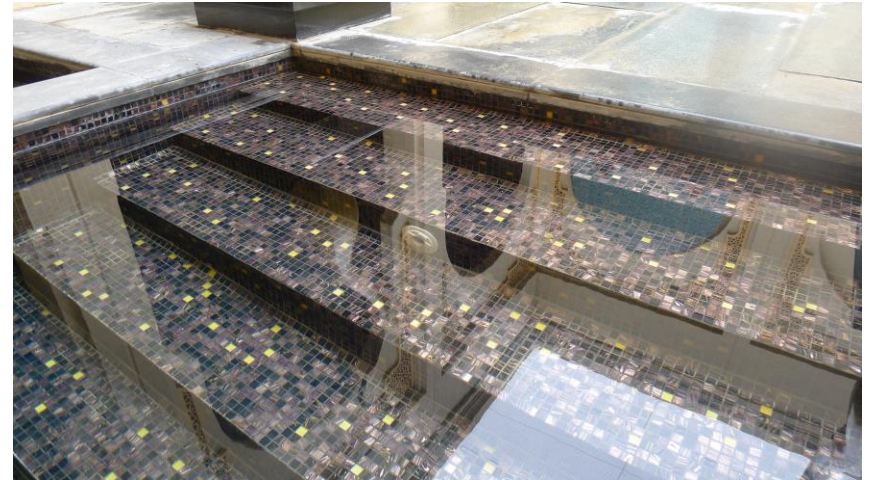
March 16, 2016



Comparison- one week interval

March 09, 2016

March 16, 2016



pH Status is 8.3- March 16, 2016



Observation(s):

- pH level is now more stable- 8.3 as compared to last week which is 8.5.
- Chlorine usage is only between 40-60% compared to the full original dosage before SW was installed.
- Scaling is gradually become soft.
- Surface of the water has no biofilm and the reflections more crystal and silky clear.
- Scaling in the pipeline where the coil is located has begun to soften also.



Recommendation(s):

- Increase the water level in the pool to soak the upper portion of the pool.
- Implement a manual removal of scale in the pool on a per section area daily.
- Additional crew is recommended to manually remove the scaling. Currently, one (1) crew is not enough to fasten the scales in the pool area.
- Regular monitoring of SW installed in the pump room.
- Apply only 40- 60% of the usual chemical(Chlorine) treatment then monitor regularly the pH.
- Regular cleaning of the filter in the pool area.



OperaKool

ENVIRONMENTAL CONTROLLERS

Your SERVICE
SPECIALIST in saving
water, money and
energy for the
Kingdom of Bahrain
and the rest of the
GCC Region



Team OperaKool #@yourservice

